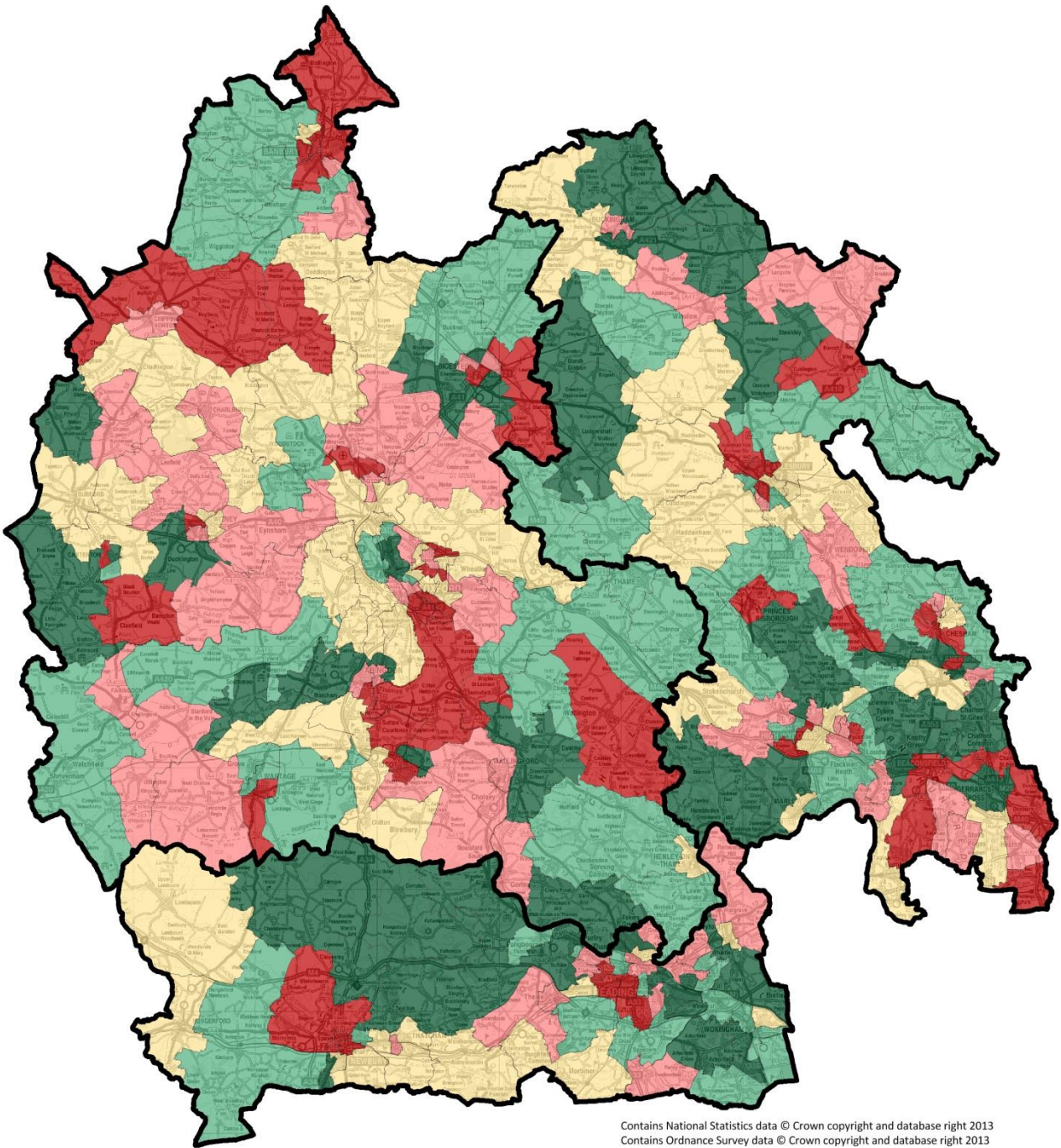


General Health Bad or Very Bad



Contains National Statistics data © Crown copyright and database right 2013
Contains Ordnance Survey data © Crown copyright and database right 2013

Produced by Buckinghamshire Public Health (publichealth@buckscc.gov.uk), 03May17

General Health Bad or Very Bad by Ward, % Population-weighted quintiles

Q1: 0.516 - 2.712
Q2: 2.719 - 3.137
Q3: 3.140 - 3.501
Q4: 3.507 - 4.182
Q5: 4.202 - 6.815

Population-weighted quintile estimates from ward-level data in Local Health.

Quintile thresholds are adjusted to include all wards with tied indicator values. Wards are allocated to the 'better' quintile.

General health bad or very bad

The worst quintile in BOB includes 54 wards (out of 293 wards with recorded data), and makes up 20.1% of the total population. Buckinghamshire has 19 wards in the worst quintile, and the worst ward in BOB, and these are;

- Booker and Cressex (**293**) – worst ranked in BOB
- Southcourt (291)
- Oakridge and Castlefield (285)
- Beaconsfield South (284)
- Gold Hill (282)
- Riverside (275)
- Denham (273)
- Great Missenden (271)
- Gatehouse (268)
- The Risboroughs (264)
- Burnham Church & Beeches (261)
- St Mary's and Waterside (260)
- Iver Village & Richings Park (259)
- Amersham-on-the-Hill (254)
- Elmhurst (252)
- Wing (249)
- Asheridge Vale and Lowndes (246)
- Central (245)
- Micklefield (240)

[Rank in brackets, where 293 is worst in BOB]

The population in each quintile, for this indicator, is as follows;

Quintile	Population	#Wards
Q1	332,484	64
Q2	332,253	60
Q3	332,263	57
Q4	336,674	58
Q5	336,418	54
Total	1,670,092	293

For this indicator 106,717 people in Bucks are in quintile 5 (32% of the quintile); this is slightly higher than expected.

Notes on the indicator

No wards in BOB were suppressed for this indicator.

Methodology/Suppression: No suppression required.

The indicator was calculated using the 'bad' and 'very bad' general health categories. General health indicators were calculated by aggregating up Output Area level data.

Definition: Number of people in the 2011 Census who reported that their health in general was bad or very bad, as a percentage of the total number of respondents to the question.

Source: ONS 2011 Census downloaded from NOMIS standard tables (QS302EW).